

OFFICE FOR LEASE

Pacific Parkway Center

6600 SW Hampton St, Portland, OR 97223



Key Features



40,250 sq. ft. office
divisible to $\pm 20,000$ sq. ft.

Standalone opportunity

Upgraded, modern finishes

Immediate access to
Interstates 5 and 217

Abundant parking

On-site fitness facility

4/1,000 parking ratio

Private patio

Available January 2025

Lease Rate:

\$24.00/sq. ft./yr.
NNN

Jake Bigby

jakeb@pactrust.com

Caitlin Knecht

caitlink@pactrust.com

503.624.6300

Owned & Managed by

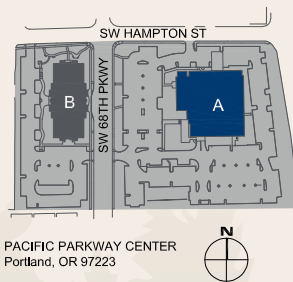
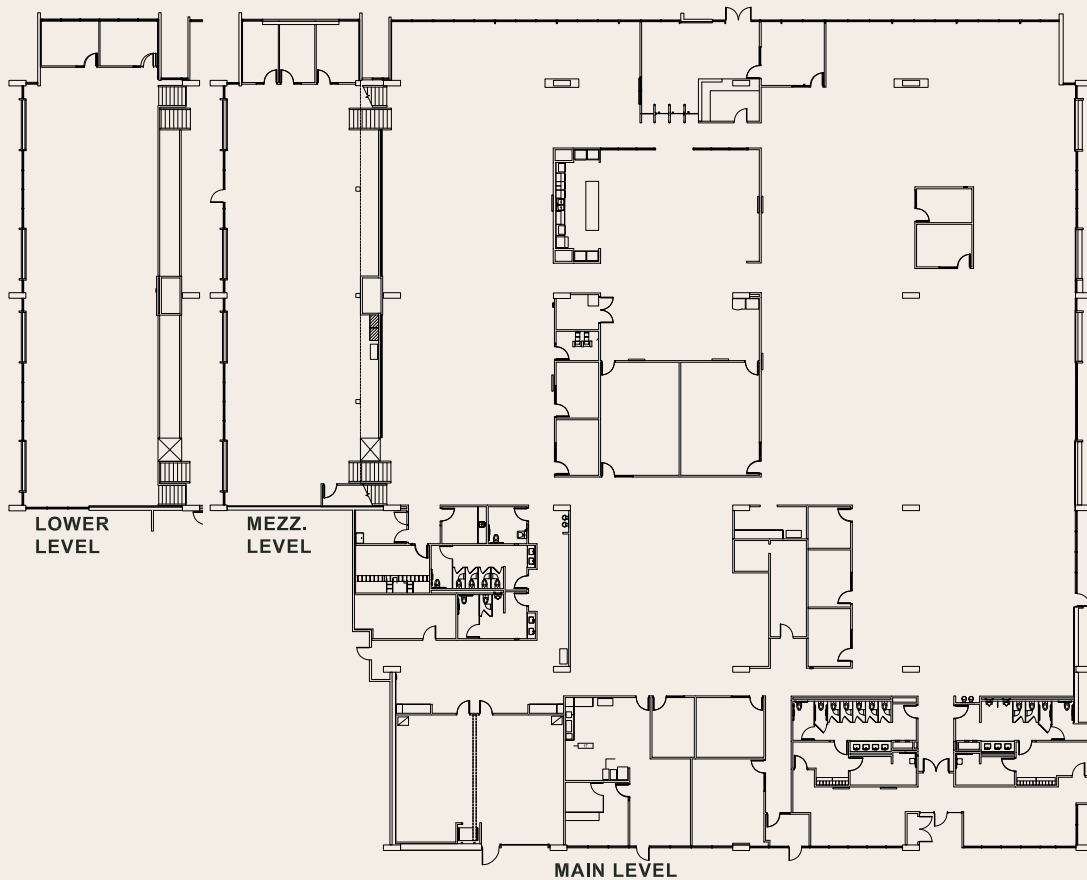
PACTRUST

© 2024 PacTrust. All information supplied herein, including but not limited to measurements, dimensions, and specifications, is deemed reliable but is not guaranteed and should be independently verified. Any reliance on the information contained herein is at the user's own risk.

Space Plan

6600 SW Hampton St, Portland, OR 97223

40,250 Sq. Ft.



Jake Bigby
jakeb@pactrust.com

Caitlin Knecht
caitlink@pactrust.com

503.624.6300
www.PacTrust.com